

PENETRATIONS LIST:
SECTION 1
CURBS
 C - 4 X6' RTV

ABANDONED CURBS (TEAR OFF OPTION: REMOVE CURB, CLOSE OPENING IN DECK AND ROOF OVER AREA. COATING OPTION: CURB TO REMAIN AND ENCAPSULATE WITH NEW COATING SYSTEM)
 2X2' - 2
 3X3' - 5
 4X6' - 3
 3X4' - 4
 5X5' - 1
 3X3X3' (H) - 1

RTVS
 19"X19" - 1
 26"X26" - 6

PIPES
 1" - 3
 4" - 2

VENT STACKS
 8" - 2

19"X19" FAN MOTOR CURB WITH 4" ROUND DUCT - QTY (10)

SECTION 3
CURBS
 A - 17X80" I-BEAM WITH (42) 4" ROUND I-BEAM SUPPERS WITH 8"X8" PITCH BOX
 B - 12X35" I-BEAM WITH (3) LARGE I-BEAM SUPPERS THRU ROOF AND (10) I-BEAMS THRU WALL SUPPERS
 2X7" I-BEAM SUPPORT WITH (6) 2" ROUND SUPPERS - QTY (1)

RTVS
 16"X16" - 1
 19"X19" - 1

UTILITY HOOD
 16"X16" - 1

GOOSE NECK DUCT THRU ROOF
 19"X19" - 1

PIPES
 1" - 4
 2" - 1
 3" - 3
 4" - 2

10X1" PITCH BOX - QTY (1)

SECTION 5
RTVS
 2X2' - 2
 CONDENSERS ON (4) 3" POSTS WITH 3X3" DUCT CURB - 1
 CONDENSER ON DUNNAGE - 1 (REPLACE WOOD WITH NEW P.T. LUMBER SET ON WALK PAD)

VENT STACK
 6" - 1

PIPES
 6" - 3

PARTIAL TEAR OFF AREA
 (COATING OPTION)(HATCHED) (TOP MEMBRANE LAYER AND 1/2" WOOD FIBER BOARD ONLY)
 (6,857 SQ. FT.)
 (SEE SPECIFICATION FOR INFILL)

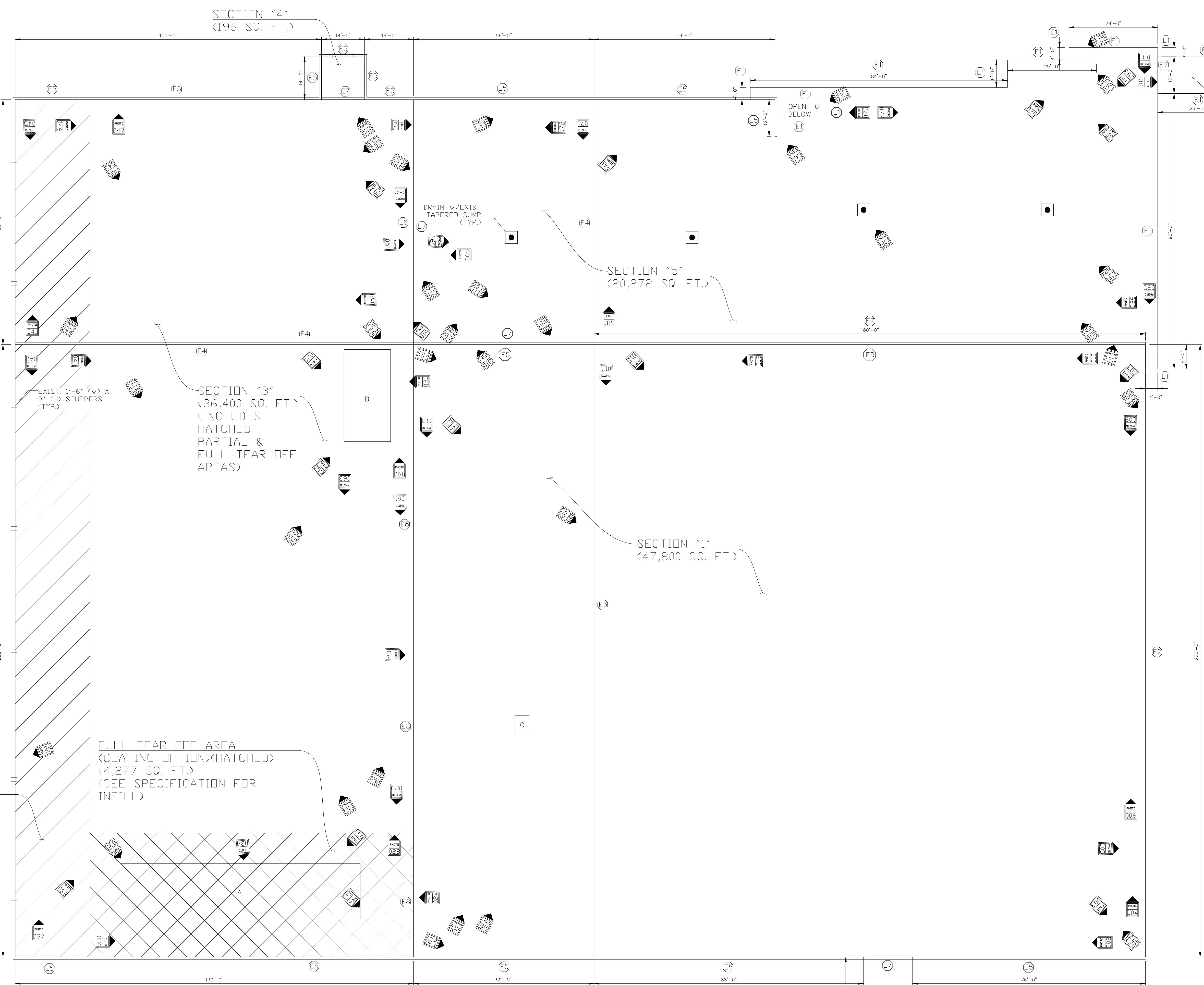
SECTION "4"
 (196 SQ. FT.)

SECTION "3"
 (36,400 SQ. FT.)
 (INCLUDES HATCHED PARTIAL & FULL TEAR OFF AREAS)

SECTION "5"
 (20,272 SQ. FT.)

SECTION "1"
 (47,800 SQ. FT.)

SECTION "6"
 (312 SQ. FT.)



- EDGE CONDITIONS LEGEND:**
- E1 - GRAVEL STOP EDGE METAL. REMOVE EXISTING EDGE METAL. INSTALL NEW WOOD BLOCKING TO MATCH HEIGHT OF NEW ROOF SYSTEM & NEW GRAVEL STOP EDGE METAL W/ FULLY ADHERED FLASHING (SEE DET 0001)
 - E2 - REMOVE EXIST. DRIP EDGE METAL AND GUTTER. INSTALL NEW WOOD BLOCKING AND TAPERED EDGE STRIP TO MATCH HEIGHT OF NEW ROOF SYSTEM. TO PROMOTE DRAINAGE INTO GUTTER AND PREVENT PONDING ALONG ROOF EDGE. INSTALL NEW 8" X 8" BDX GUTTER W/ (8) DOWNSPOUTS IN ORIGINAL LOCATIONS (SEE DET 0002)
 - E3 - FLUSH EXP. JOINT. REMOVE EXISTING EXP. JOINT. INSTALL FOAM ROD 1 1/2 TIMES WIDTH OF JOINT AND INSTALL MEMBRANE OVER AND TIE INTO THE FIELD OF ROOF ON BOTH SIDES
 - E4 - EXIST 1" (H) WALL BETWEEN ROOF AREAS TO REMAIN REMOVE ANY EXISTING COPING METAL AND WALL FLASHINGS. INSTALL NEW FULLY ADHERED WALL FLASHING OVER EXISTING BLOCKING DOWN OPPOSITE FACE AND TIE INTO FIELD MEMBRANE ON BOTH SIDES OF WALL
 - E5 - 8" (H) TO 5'-0" (H)(VARIES) X 9"(W) PARAPET WALL. REMOVE EXISTING METAL COPING, WALL FLASHINGS. INSTALL FULLY ADHERED WALL FLASHING UP OVER EXIST. TOP PLATE AND DOWN FRONT FACE. INSTALL NEW TWO PIECE METAL FASCIA (SEE DET. 0003)

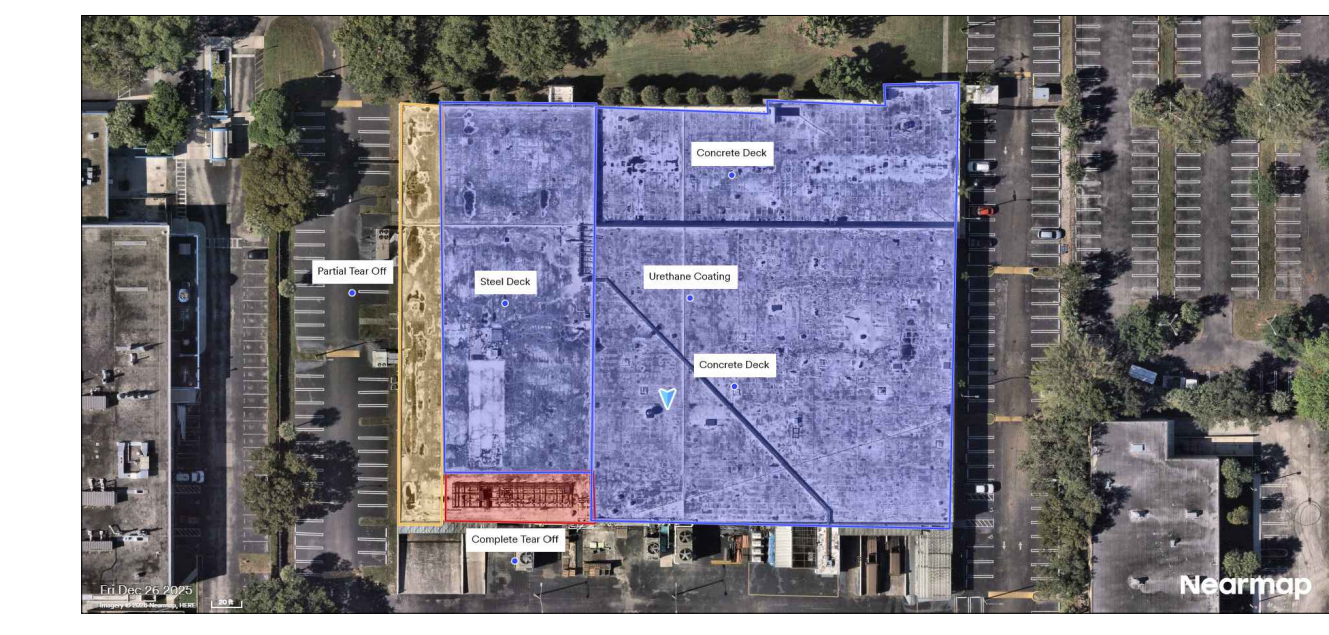
- E6 - GRAVEL STOP EDGE METAL. REMOVE EXISTING EDGE METAL, AND FLUSH EXP. JOINT. INSTALL FOAM ROD 1 1/2 X WITH OF JOINT. INSTALL NEW WOOD BLOCKING TO MATCH HEIGHT OF NEW ROOF SYSTEM & NEW GRAVEL STOP EDGE METAL W/ FULLY ADHERED FLASHING (SEE DET 0001)
- E7 - 1'-0" (H) WALL FLASHING. REMOVE ALL FLASHINGS FULLY ADHERE NEW WALL FLASHING. INSTALL TERM BAR, SEALANT AND NEW SURFACE MOUNTED COUNTER FLASHING W/ SEALANT JOINT (SEE DET 0003)
- E8 - 4'-0" (H) VERT. TRANSITION BETWEEN ROOF AREAS. REMOVE EXISTING FLASHINGS AND INSTALL NEW BLOCKING ON TOP EDGE TO MATCH HEIGHT OF NEW ROOF SYSTEM. INSTALL FULLY ADHERED WALL FLASHING FULL HEIGHT AND TIE INTO FIELD MEMBRANE ON BOTH SIDES OF TRANSITION

EDGE CONDITION LEGEND NOTES EXISTING CONDITIONS AND NEW CONDITIONS FOR TEAR OFF OPTION

FOR COATING OPTION EXISTING EDGE CONDITIONS TO REMAIN AND PREPARED FOR NEW COATING SYSTEM - COAT ALL FLASHINGS WITH NEW COATING SYSTEM

FOR PARTIAL TEAR OFF AND FULL TEAR OFF AREAS (FOR COATING OPTION) ON SECTION #3 REPLACE EDGE FLASHINGS AS NOTED ON EDGE CONDITION LEGEND (SEE EDGE CONDITIONS E5 & E8)

ROOF PLAN



KEY PLAN (NOT TO SCALE)

General Notes



DISCLAIMER
 ALL DEAD, DESIGNED ARRANGEMENTS, AND PLANS INDICATED OR REPRESENTED BY THIS DRAWING ARE OWNED BY AND ARE THE PROPERTY OF RP ROOFING PROJECTS.COM AND WERE CREATED, EVOLVED AND DEVELOPED FOR USE ON AND IN CONNECTION WITH THE SPECIFIC PROJECT. NONE OF SUCH LOGOS, DESIGNS, ARRANGEMENTS OR MARKS SHALL BE USED BY OR DISCLOSED TO ANY THIRD PARTY WITHOUT THE WRITTEN PERMISSION OF RP ROOFING PROJECTS.COM.
 WRITTEN DIMENSIONS ON THIS DRAWING SHALL TAKE PRECEDENCE OVER SCALED DIMENSIONS. CONTRACTORS SHALL VERIFY AND BE RESPONSIBLE FOR ALL DIMENSIONS AND CONDITIONS ON THE JOB AND THIS OFFICE MUST BE NOTIFIED OF ANY VARIATIONS FROM THE DIMENSIONS AND CONDITIONS SHOWN BY THESE DRAWINGS.

No.	Revision/Issue	Date

Firm Name and Address
 RoofingProjects.com
 17 High Street
 Suite 301
 Norwalk, CT
 06851

Project Name and Address
 2026
 National Moldings
 14427 NW 60th Ave
 Miami Lakes, FL 33014

Project Date April 10, 2026 Scale 1/16" = 1'-0"	Sheet 1
--	-------------------