

SECTION "A"  
(18,360 SQ. FT.)

EDGE CONDITION LEGEND:

E1 — 3'-3" (H) TO 5'-5" (H)(VARIES) X 0'-8" 1'-6"(W) PARAPET WALL REMOVE EXISTING METAL COPING AND WALL FLASHINGS. INSTALL FULLY ADHERED WALL FLASHING UP OVER EXIST. TOP PLATE AND DOWN FRONT FACE, INSTALL NEW TWO PIECE METAL FASCIA (SEE DET. 0001)

PENETRATIONS LIST:

RTUS  
A - 4'6"X8'  
C - 3'6"X7'

RTVS  
1'4"X1'4" - 3  
B - 4'X4' - 1  
3'X3' - 2

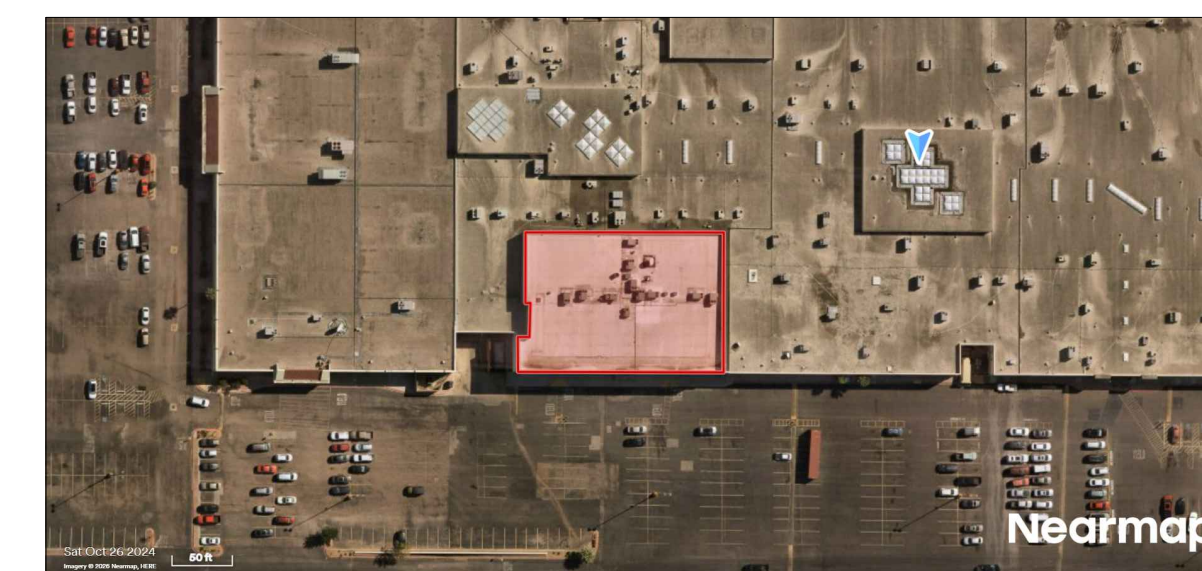
ROOF HATCH  
3'X3'6"

PIPES  
2" - 11  
4" - 1  
5" - 1

KITCHEN EXHAUST FAN  
3'X3' - 1

SATELLITE DISH BASE (SET ON WALK PADS)  
10'X10' - 1  
4'6"X4'6" - 1

UTILITY HOOD  
4"X4"



LOCATION MAP (NOT TO SCALE)

General Notes



DISCLAIMER  
ALL DEAD, DESIGNED ARRANGEMENTS, AND PLANS INDICATED OR REPRESENTED BY THIS DRAWING ARE OWNED BY, AND ARE THE PROPERTY OF ROOFINGPROJECTS.COM AND WERE CREATED, EVOLVED AND DEVELOPED FOR USE ON AND IN CONNECTION WITH THE SPECIFIED PROJECT. NONE OF SUCH LOGOS, DESIGNS, ARRANGEMENTS OR MARKS SHALL BE USED BY OR DISCLOSED TO ANY THIRD PARTY WHATSOEVER WITHOUT THE WRITTEN PERMISSION OF ROOFINGPROJECTS.COM.  
WRITTEN DIMENSIONS ON THIS DRAWING SHALL TAKE PRECEDENCE OVER SCALED DIMENSIONS. CONTRACTORS SHALL VERIFY AND BE RESPONSIBLE FOR ALL DIMENSIONS AND CONDITIONS ON THE JOB AND THIS OFFICE MUST BE NOTIFIED OF ANY VARIATIONS FROM THE DIMENSIONS AND CONDITIONS SHOWN BY THESE DRAWINGS.

No.	Revision/Issue	Date

Firm Name and Address  
RoofingProjects-com  
17 High Street  
Suite 301  
Norwalk, CT  
06851

Project Name and Address  
2026  
Cinemark  
455 S Bibb Ave Suite 2005  
Eagle Pass, TX 78852

Project	Sheet
Date	1
March 16, 2026	
Scale	
1/8" = 1'-0"	