

Pipe penetrations

- 1" - (8)
- 2" - (3)
- 4" - (16)
- 5" - (8)

8" x 8" view screen penetrations - (31)

- 10" x 10" Abandoned capped curb - (3) - remove, close opening in deck and roof over area
- 1'6" x 1'6" Abandoned capped curb - (1) - remove, close opening in deck and roof over area
- 10" x 10" utility hood with conduits - (2)
- Condenser unit on 2, 4' x 6" equipment support curbs - (2)
- Condenser unit on 2, 6' x 6" equipment support curbs - (1)
- 20' x 8' condenser units on top of 2, 20' x 6" equipment support curbs - (3)
- Downspouts in rear of building 5' x 5" square - (6)

RTVs

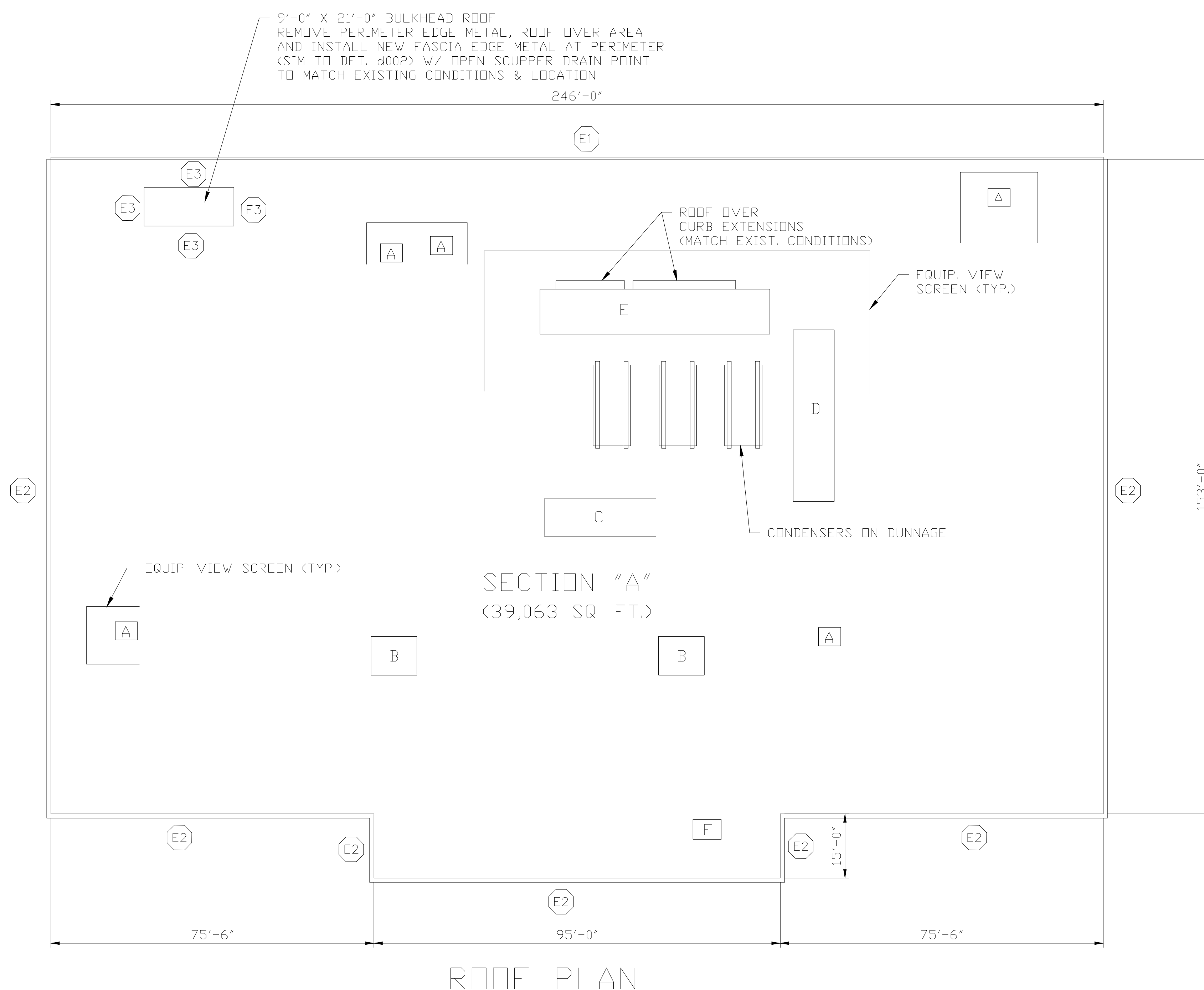
- 1' x 1' - (4)
- 1'6" x 1'6" - (3)
- 2' x 2' - (4)

RTUs

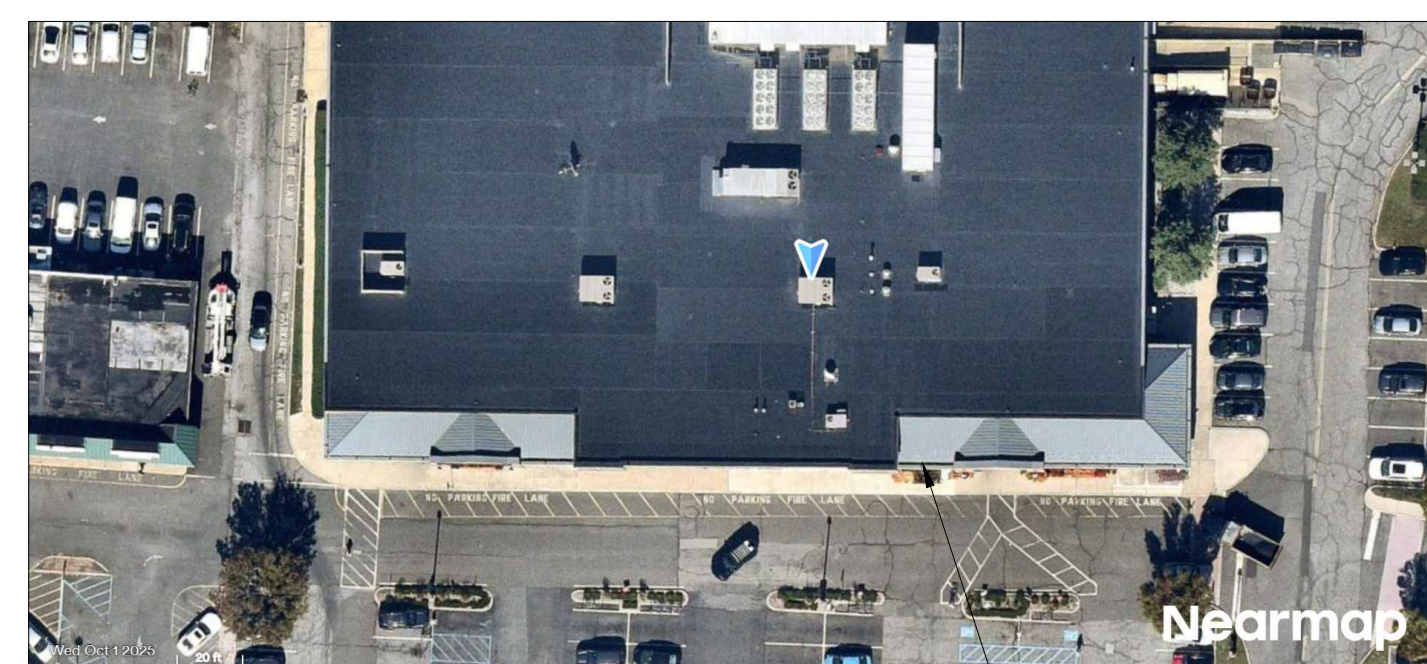
- A- 6'6" x 4'
- B- 6' x 9'
- C- 8' x 26'
- D- 38' x 9'6"
- E- 55' x 9'6"
- F- 3' x 6'

EDGE CONDITION LEGEND

- E1 - REMOVE EXIST. DRIP EDGE METAL AND 6" X 6" GUTTER. INSTALL NEW 6" X 6" BOX GUTTER W/ DOWNSPOUTS IN ORIGINAL LOCATIONS (MATCH EXIST. SIZE) (SEE DET. 0001)
- E2 - REMOVE EXISTING METAL COPING OR EDGE METAL. INSTALL 3" TO 3'-0" (H) X 9" TO 1'-6" (W) FULLY ADHERED WALL FLASHING UP OVER EXIST. TOP PLATE AND DOWN FRONT FACE. INSTALL NEW TWO PIECE METAL FASCIA (SEE DET. 0002)
- E3 - INSTALL 8" (H) FULLY ADHERED WALL FLASHING, TERM BAR W/ SEALANT AND NEW SURFACE MOUNTED COUNTER FLASHING W/ SEALANT AT TOP (SEE DET. 0003)



ROOF PLAN



AT ALL EPDM LINED BUILT-IN GUTTERS AT THE BASE OF ALL METAL ROOF AREAS (APPROX. 180 LIN. FT.) CLEAN MEMBRANE, INSTALL SPOT REPAIRS AS REQUIRED AND INSTALL A TWO COAT URETHANE COATING ON BOTTOM AND SIDES OF GUTTER

A LINE ITEM ON THE BID FORM WILL ADDRESS AN ADD ALTERNATE PRICE TO REMOVE THE EXISTING GUTTER LINING AND INSTALL NEW FULLY ADHERED UN-REINFORCED EPDM GUTTER LINER



DISCLAIMER
ALL IDEAS, DESIGN ARRANGEMENTS, AND PLANS INDICATED OR REPRESENTED BY THIS DRAWING ARE OWNED BY AND ARE THE PROPERTY OF ROOFINGPROJECTS.COM AND WERE CREATED, DEVELOPED AND REVISED FOR USE ON AND IN CONNECTION WITH THE SPECIFIC PROJECT. NONE OF SUCH IDEAS, DESIGNS, ARRANGEMENTS OR PLANS SHALL BE USED BY OR DISCLOSED TO ANY PURPOSE WHATSOEVER WITHOUT THE WRITTEN PERMISSION OF ROOFINGPROJECTS.COM.
WRITTEN DIMENSIONS ON THIS DRAWING SHALL TAKE PRECEDENCE OVER SCALED DIMENSIONS. CONTRACTORS SHALL VERIFY AND BE RESPONSIBLE FOR ALL DIMENSIONS AND CONDITIONS ON THE JOB AND THIS OFFICE MUST BE NOTIFIED OF ANY VARIATIONS FROM THE DIMENSIONS AND CONDITIONS SHOWN BY THESE DRAWINGS.

No.	Revision/Issue	Date

Firm Name and Address
RoofingProjects.com
17 High Street
Suite 301
Norwalk, CT
06851

Project Name and Address
2026
ACME #4932
616 NEWMAN SPRINGS ROAD
LINCROFT, NJ

Project	Sheet
Date April 2, 2026	1
Scale 1/16" = 1'	