

**PENETRATIONS LIST:**

**CURBS**

- A - CHILLER UNITS ON 18'X72" I-BEAMS WITH (1) 5" ROUND SUPPORTS
- B - 4'X7" RTU
- C - CHILLER UNITS ON 9'X20" I-BEAMS WITH (4) 5" ROUND SUPPORTS
- D - 5'6"X10'6" RTV
- E - 7'X17" RTU
- F - 3'X5' RTU
- ROOF HATCH - 32"X39"

**PIPES**

- 1" - 2
- 2" - 9
- 3" - 6
- 4" - 26
- 5" - 2
- 8" - 1 (SAT DISH)

7" PIPE CAPPED - 2

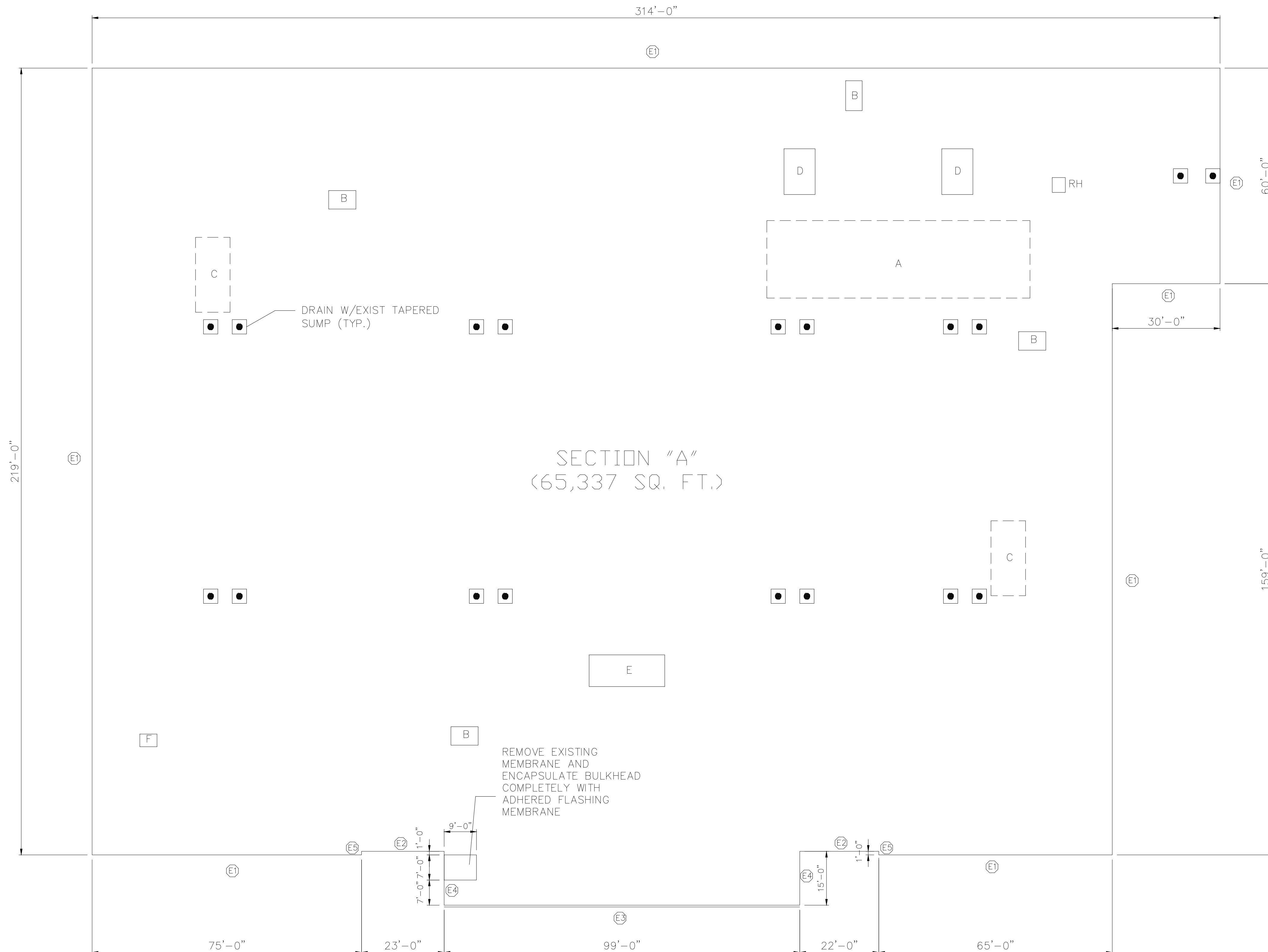
**VENT STACKS**

- 8" - 3
- 10" - 8

- CONDENSER ON (2) 6' LONG ESC'S - 1
- 4'X4' SATELLITE DISH PAD - 1 (SET ON WALK PADS)
- 1'X3'6" SUPPORT CURB WRAPPED - 1
- 1'X1'6" SUPPORT CURB WRAPPED - 4
- CONDENSER ON (3) 2'6" LONG WOOD SUPPORTS - 1 (REPLACE W/ P.T. LUMBER AND SET ON WALK PADS)
- 2'X2' ABANDONED CURB - 1
- 1'6"X1'6" KITCHEN EXHAUST FAN - 1
- 2'X2' KITCHEN EXHAUST FAN - 4
- 1'6"X1'6" RTV - 10
- 2'X4' RTV - 2
- 2'X2' RTV - 2
- 3'X3' RTV - 1
- 1'9"X1'9" RTV - 1
- 5'X5' RTV - 2

**UTILITY HOODS**

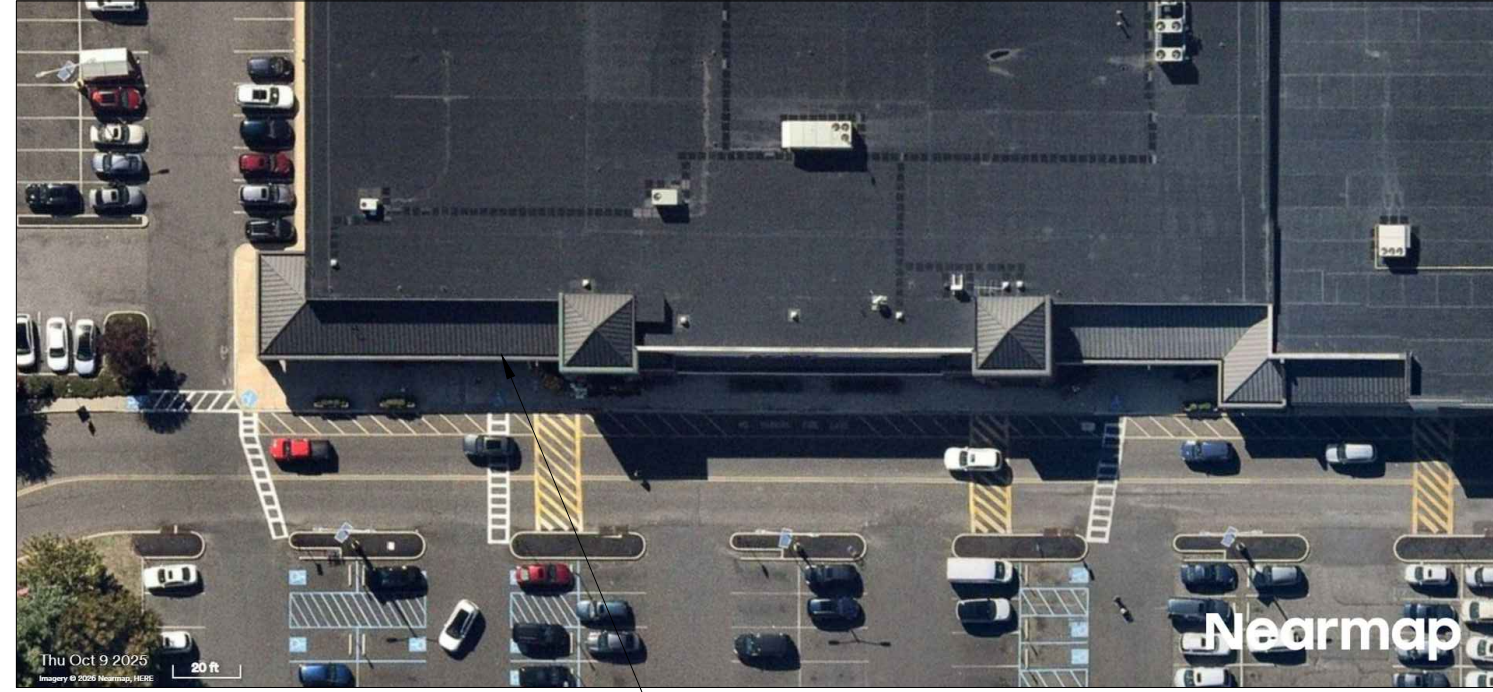
- 1'4"X1'9" - 3
- 1'4"X3'6" - 1
- 2'X2' - 6
- 1'X1' - 1



SECTION "A"  
(65,337 SQ. FT.)

REMOVE EXISTING  
MEMBRANE AND  
ENCAPSULATE BULKHEAD  
COMPLETELY WITH  
ADHERED FLASHING  
MEMBRANE

- EDGE CONDITIONS LEGEND:**
- E1 - GRAVEL STOP EDGE METAL, REMOVE EXISTING EDGE METAL, INSTALL NEW GRAVEL STOP EDGE METAL W/ FULLY ADHERED FLASHING (SEE DET 0001)
  - E2 - 3'-0" TO 4'-0" (H) WALL FLASHING, REMOVE FLASHINGS, INSTALL FULLY ADHERED NEW WALL FLASHING, INSTALL TERM BAR, SEALANT AND SLIP FLASHING TO BACKSIDE OF EXISTING METAL COUNTER FLASHING TO REMAIN (SEE DET 0002)  
NOTE: AT ENDS OF EXISTING BUILT-IN GUTTER TO REMAIN, SLICE EXISTING FLASHING HORIZONTALLY 8" BELOW BASE OF GUTTER, INSTALL NEW FLASHING UP & BEHIND EXIST. FLASHING WITH TERM BAR AND SEALANT, FOLD EXIST. FLASHING OVER NEW FLASHING AND ADHERE IN PLACE, STRIP IN WITH PRESSURE SENSITIVE FLASHING TAPE
  - E3 - 4'-0" (H) X 1'-1 1/2" (W) PARAPET WALL, REMOVE EXISTING METAL COPING, WALL FLASHINGS, FULLY ADHERED WALL FLASHING UP OVER EXIST. TOP PLATE AND DOWN FRONT FACE, INSTALL NEW TWO PIECE METAL FASCIA (SEE DET. 0003)  
NOTE: EXISTING SIGN BRACKETS AT ROOF SIDE OF WALL TO REMAIN IN PLACE, FLASH INTO NEW ROOF SYSTEM
  - E4 - 3'-0" TO 4'-0" (H) WALL FLASHING, REMOVE FLASHINGS, INSTALL FULLY ADHERED NEW WALL FLASHING OVER TOP AND INTO BUILT IN GUTTER, INSTALL TERM BAR AND SEALANT  
NOTE: AT ENDS OF EXISTING BUILT-IN GUTTER TO REMAIN, SLICE EXISTING FLASHING HORIZONTALLY 8" BELOW BASE OF GUTTER, INSTALL NEW FLASHING UP & BEHIND EXIST. FLASHING WITH TERM BAR AND SEALANT, FOLD EXIST. FLASHING OVER NEW FLASHING AND ADHERE IN PLACE, STRIP IN WITH PRESSURE SENSITIVE FLASHING TAPE
  - E5 - LOW FLASHING UNDER EIFS CLADDING, CUT EXISTING MEMBRANE TO INSTALL NEW MEMBRANE UNDER, STRIP IN WITH UN-CURED EPDM FLASHING STRIP AND COAT WITH LIQUID FLASHING



ROOF PLAN

AT ALL EPDM LINED BUILT-IN GUTTERS AT THE BASE OF ALL METAL ROOF AREAS (APPROX. 480 LIN. FT.) CLEAN MEMBRANE, INSTALL SPOT REPAIRS AS REQUIRED AND INSTALL A TWO COAT URETHANE COATING ON BOTTOM AND SIDES OF GUTTER

A LINE ITEM ON THE BID FORM WILL ADDRESS AN ADD ALTERNATE PRICE TO REMOVE THE EXISTING GUTTER LINING AND INSTALL NEW FULLY ADHERED UN-REINFORCED EPDM GUTTER LINER

General Notes



DISCLAIMER  
ALL DEAD, DESIGNED ARRANGEMENTS, AND PLANS INDICATED OR REPRESENTED BY THIS DRAWING ARE OWNED BY, AND ARE THE PROPERTY OF ROOFINGPROJECTS.COM AND WERE CREATED, EVOLVED AND DEVELOPED FOR USE ON AND IN CONNECTION WITH THE SPECIFIED PROJECT. NONE OF SUCH LOGOS, DESIGNS, ARRANGEMENTS OR MARKS SHALL BE USED BY OR DISCLOSED TO ANY THIRD PARTY WITHOUT THE WRITTEN PERMISSION OF ROOFINGPROJECTS.COM.  
WRITTEN DIMENSIONS ON THIS DRAWING SHALL TAKE PRECEDENCE OVER SCALED DIMENSIONS. CONTRACTORS SHALL VERIFY AND BE RESPONSIBLE FOR ALL DIMENSIONS AND CONDITIONS ON THE JOB AND THIS OFFICE MUST BE NOTIFIED OF ANY VARIATIONS FROM THE DIMENSIONS AND CONDITIONS SHOWN BY THESE DRAWINGS.

No.	Revision/Issue	Date

Firm Name and Address  
RoofingProjects-com  
17 High Street  
Suite 301  
Norwalk, CT  
06851

Project Name and Address  
2026  
Acme #992  
700 Haddonfield-Berlin Rd  
Voorhees Township, NJ 08043

Project	Sheet
Date April 2, 2026	1
Scale 1/16" = 1'-0"	